



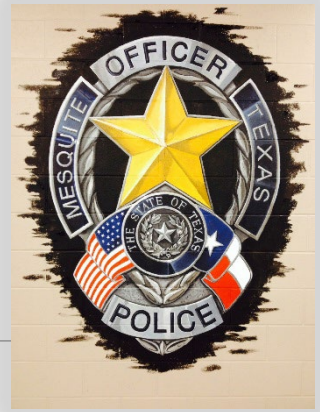
# Mesquite Police Department Industrial Safety Presentation

---

SEPTEMBER 18, 2025

# Welcome to Mesquite

---

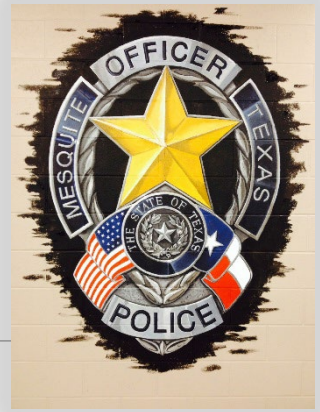


Whether you are already a community partner, or your business is looking to operate in our city, the Mesquite Police Department (MPD) is committed to fostering a safe, secure, and responsive environment. We have always valued strong public-private partnerships that support both public safety and economic growth.

MPD provides 24/7 emergency and non-emergency police response services. Our goal is always to ensure prompt and effective resolution to any public safety issue on or around your property.

# How Can MPD Help You?

---



## Call Types We Respond To:

### Emergency Calls:

- Active shooter / workplace violence
- Robbery or burglary in progress
- Assaults or disturbances
- Suspicious persons or vehicles
- Medical emergencies (assistance to EMS)
- Fire alarms and hazardous incidents (in coordination with Fire Department)



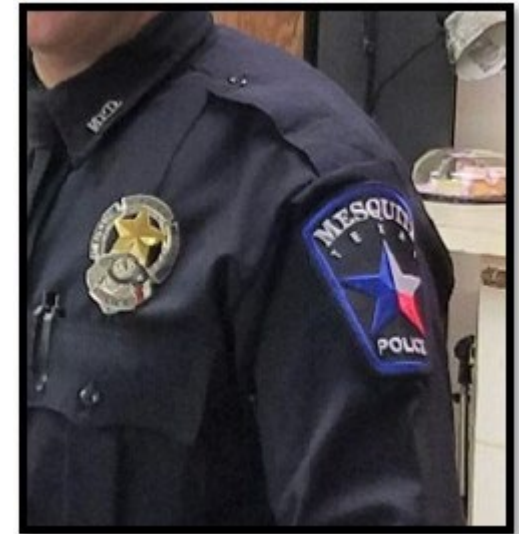
# How Can MPD Help You?

---



## **Non-Emergency / Routine Calls:**

- Theft (internal or external)
- Trespassing or unauthorized access
- Employee disputes or disorderly conduct
- Fraud or forgery
- Welfare checks
- Alarm responses (burglary, panic, environmental)



# How Can MPD Help You?

---



## 1. Emergency Action Plan Review

- Alignment with police/fire response
- Communication plans and evacuation procedures

## 2. C.R.A.S.E. Training (Civilian Response to Active Shooter Events)

- "Avoid, Deny, Defend" principles
- Scenario-based discussions
- Site-specific strategies



# How Can MPD Help You?

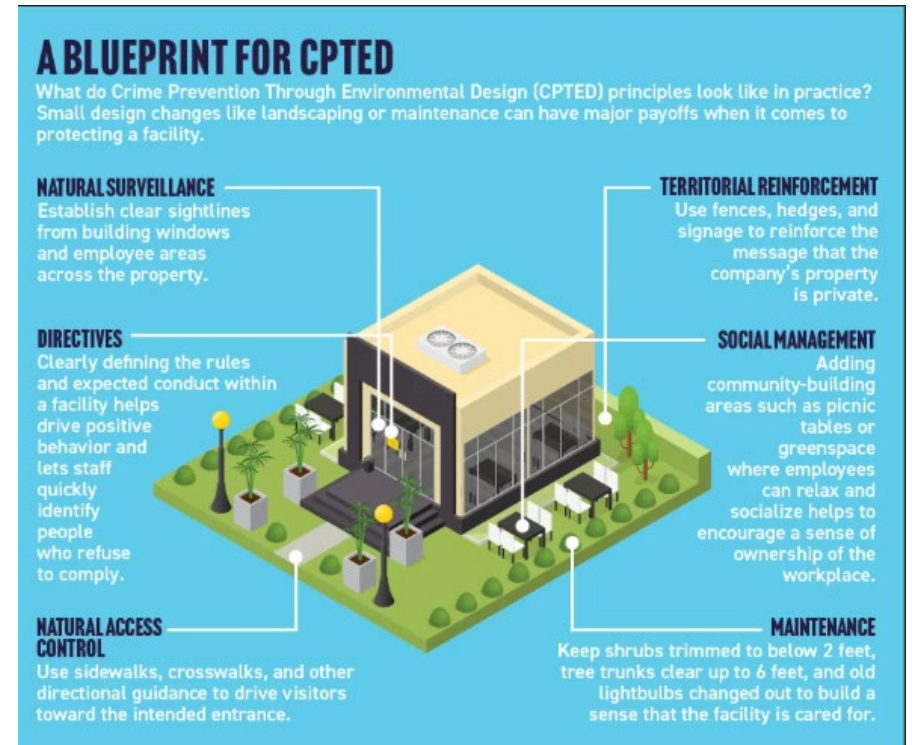


## 3. Workplace Violence & Threat Assessment Consulting

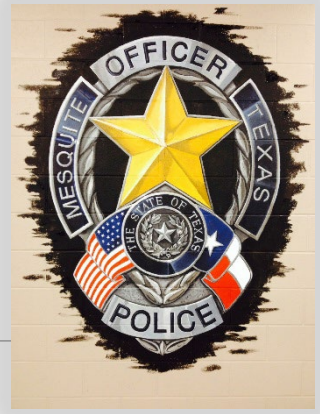
- Early threat identification
- Specialized unit referrals

## 4. Site Security Assessments

- Physical security review
- Incident history and crime trends
- Tailored risk reduction recommendations



# How Can You Help Us?



1. Accurate and detailed floor plans
2. Gated entry / key access coordination
3. Security camera systems
4. Employee badge & visitor systems
5. Regular emergency drills
6. 24/7 point-of-contact roster
7. Hazardous materials reporting
8. Lighting & landscape security



# Volunteer Opportunities



## Citizens Police Academy

- Typically begins in September and last 10 weeks
- Classes held every Thursday from 7pm-9pm
- 18 or older to apply



### QUALIFICATIONS:

- Live or work in Mesquite
- Pass background check

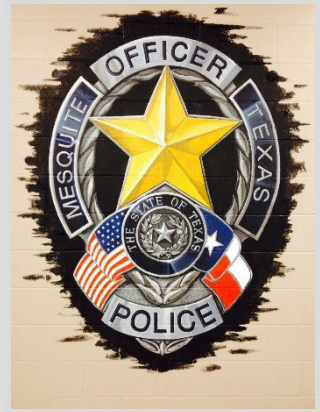
# Building the Partnership

---



We believe safety is a shared responsibility. MPD will maintain open communication with your leadership and security teams, and we're always ready to assist with concerns, education, or emergency response.

# Questions?



Contact Information: Greg McMillen  
Mesquite Police Department – Crime  
Prevention/Staff Support

Phone: 972-216-8757

Email: [gcmille@mesquitepolice.org](mailto:gcmille@mesquitepolice.org)

Website:

<https://www.cityofmesquite.com/442/Police>



---

THANK YOU