

MESQUITE 80

LOGISTICS CENTER

203,488 SF
AVAILABLE FOR LEASE



Developed By:



2800 E US Hwy 80
Mesquite, TX 75149

Leased By:

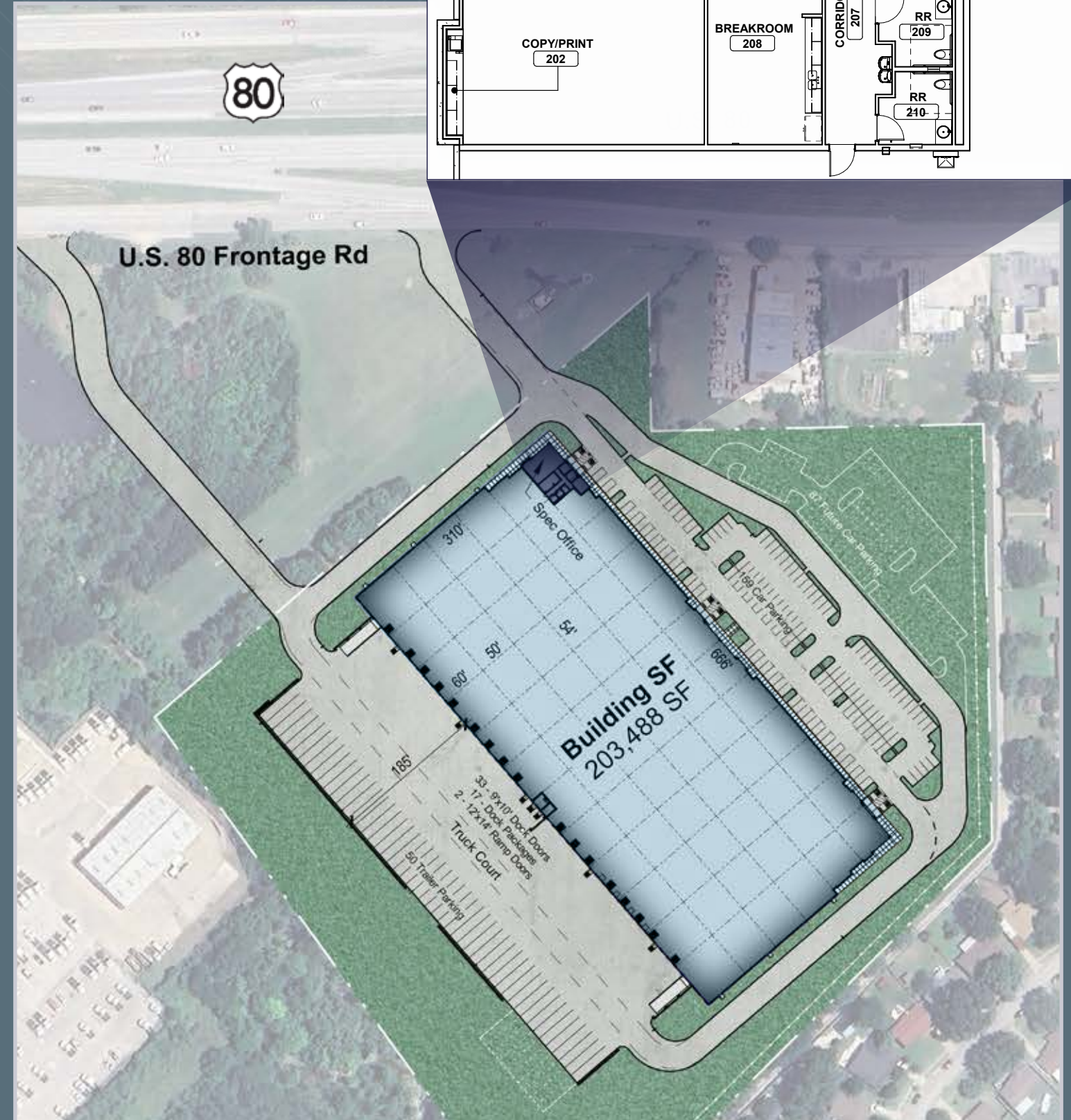
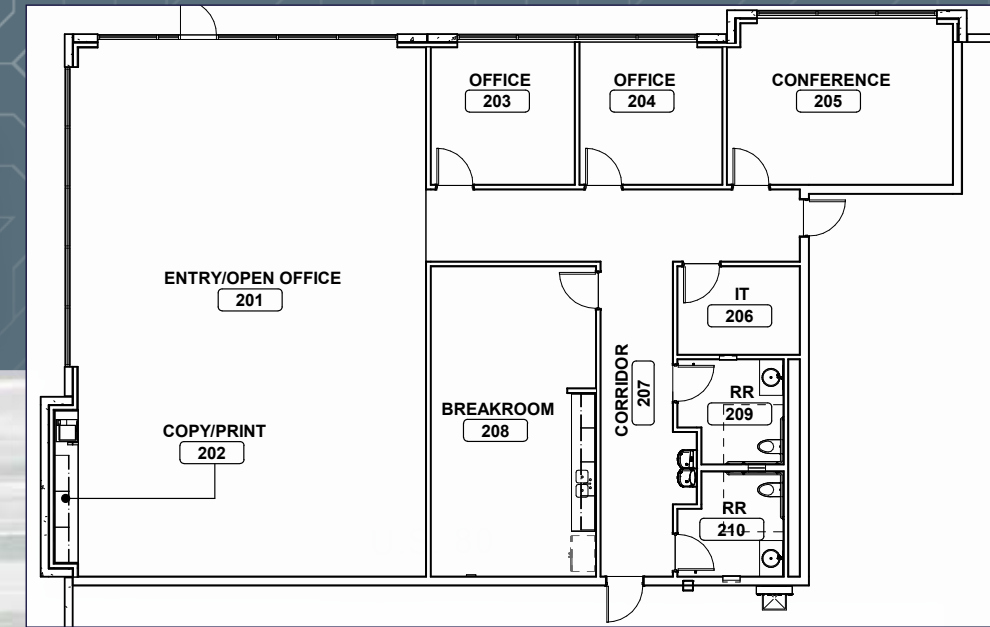


BUILDING SPECS

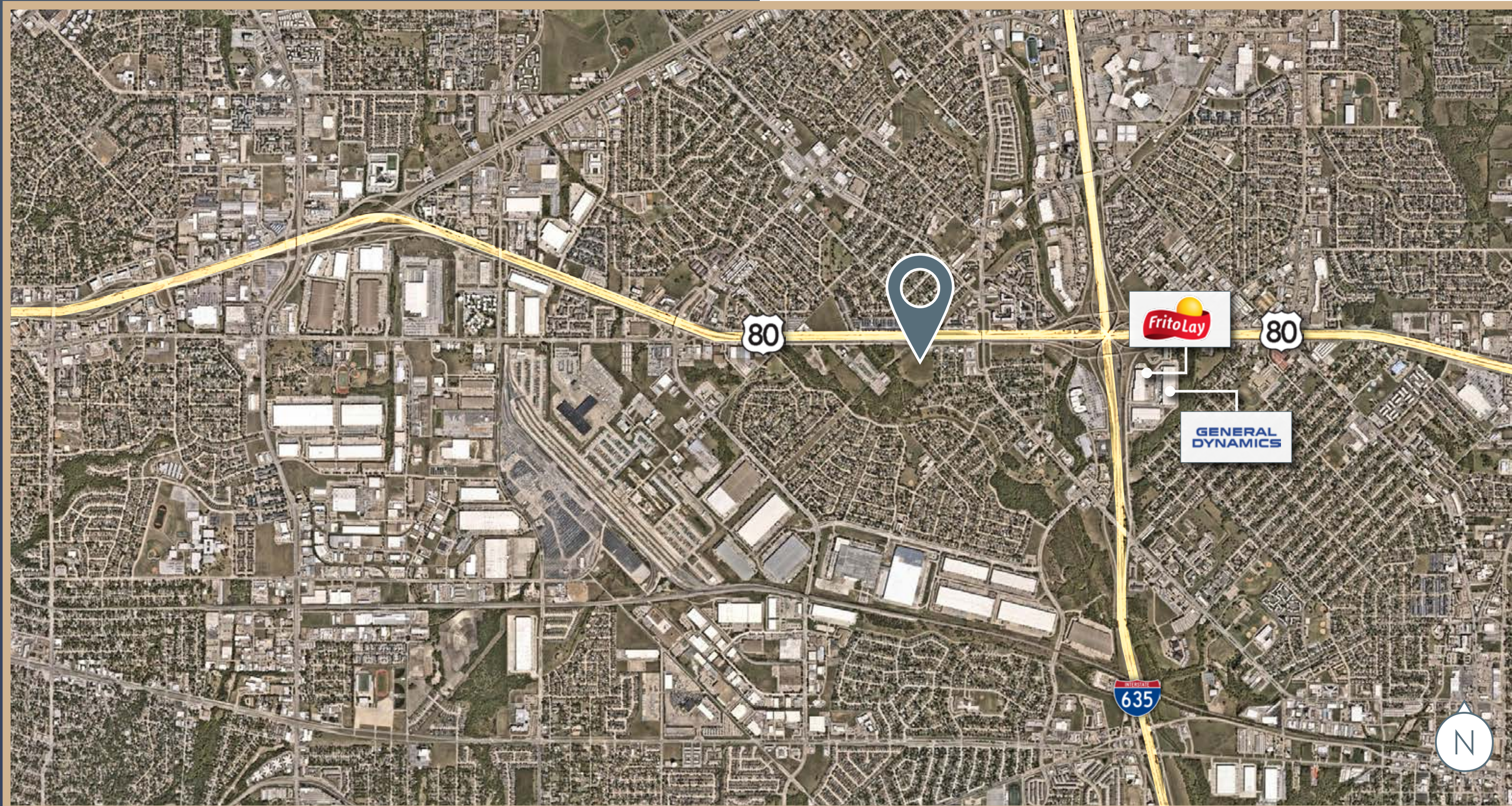
SITE PLAN

2800 E US HWY 80, MESQUITE, TX 75149

BUILDING SIZE	203,488 SF
ACREAGE	16.16 AC
OFFICE SIZE	3,048 SF
BUILDING DIMENSIONS	310' X 666'
BUILDING CONFIGURATION	REAR LOAD
CLEAR HEIGHT	32'
COLUMN SPACING	54' X 50'
DOCK DOORS	33 (9' x 10') - 17 DOCK PACKAGES
DRIVE-IN DOORS	2 (12' x 14')
TRUCK COURT DEPTH	185'
TRAILER PARKING	50 (+10 POTENTIAL FUTURE)
AUTO PARKING	159 (+87 POTENTIAL FUTURE)
SLAB THICKNESS	6" REINFORCED CONCRETE
FIRE PROTECTION	ESFR



PRIME LOCATION



DRIVE TIMES



DFW
AIRPORT
30 MINS

LOVEFIELD
AIRPORT
25 MINS

DALLAS
CBD
15 MINS

UNION PACIFIC
MESQUITE INTERMODAL
8 MINS

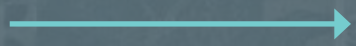
UNION PACIFIC DALLAS
INTERMODAL TERMINAL
19 MINS

MESQUITE80
LOGISTICS CENTER

INGRESS / EGRESS



Ingress



Egress





Developed By:

CROW
HOLDINGS
CAPITAL

Leased By:



MESQUITE 80

LOGISTICS CENTER



BEN WALLACE, SIOR

+1 972 692 6234
ben.wallace@colliers.com

NOAH DODGE

+1 214 217 4647
noah.dodge@colliers.com

CHRIS TEESDALE, SIOR

+1 214 217 1233
chris.teesdale@colliers.com